

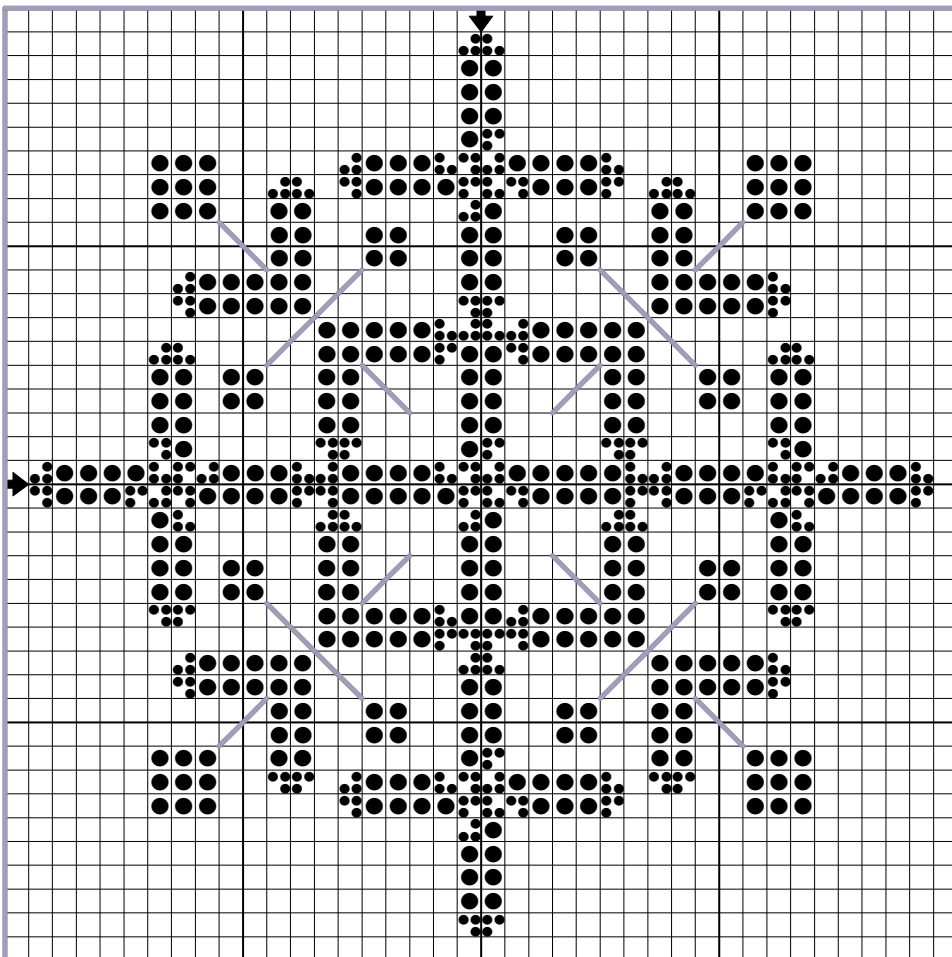
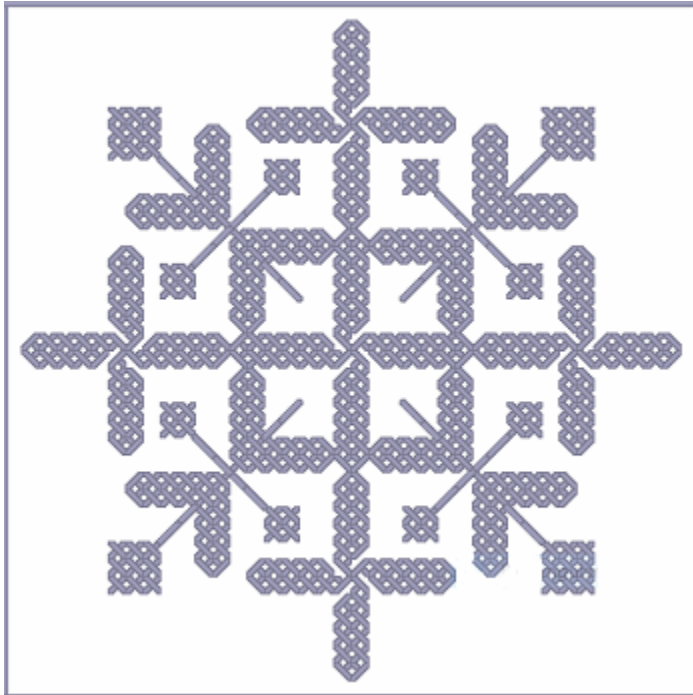
A LITTLE SNOWFLAKE[©]

Stitch count is 40w x 40h

This snowflake design compliments the snowflakes in the Sno-Unique leaflet. To match them, follow the border and finishing instructions in that leaflet. Otherwise....

Stitch this entire design with two strands of floss. Allow five blocks beyond the outer border, four of which will be fringed.

Suggested floss and fabric: The Gentle Arts Sampler Threads #0870 Sugarplum on white 14 ct Aida Cloth. **Or** to match Sno-Unique, use the Gentle Arts Simply Wool #0811-W Wisteria on 14ct Dk Blue Aida Cloth.



Three identical symbols in one grid square indicates a 3/4 stitch, **not** three 1/4 stitches!